

<http://hiv.lacounty.gov>

# Los Angeles County Commission on HIV Comprehensive HIV Plan (CHP)

2017-2021



Division of HIV and  
STD Programs



LOS ANGELES COUNTY  
COMMISSION ON HIV



# Purpose

- Serves as a jurisdictional HIV/AIDS Strategy.
- A living document and as a roadmap to guide HIV prevention and care planning throughout the year.
- Addresses local needs and opportunities for improvement.
- Emphasizes collaboration and coordination.



# CHP Sections

## I. Needs Assessment

I. Epidemiologic Overview

II. HIV Care Continuum in LAC

III. Financial and Human Resources Inventory

IV. Assessing Needs, Gaps and Barriers

V. Data: Access, Sources and Systems

## II. Integrated HIV Prevention and Care Plan

## III. Monitoring and Improvement

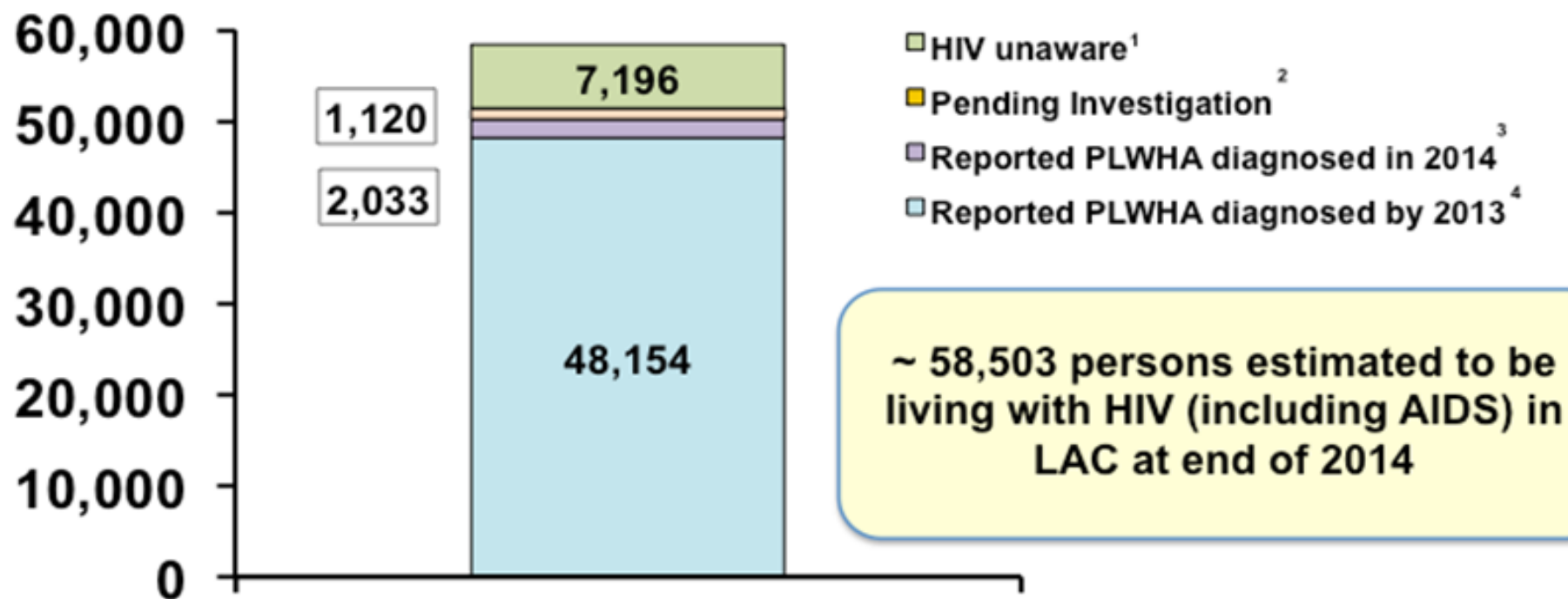


# Integrated HIV Prevention and Care Plan

- Highlights
- See full document on <http://hiv.lacounty.gov>



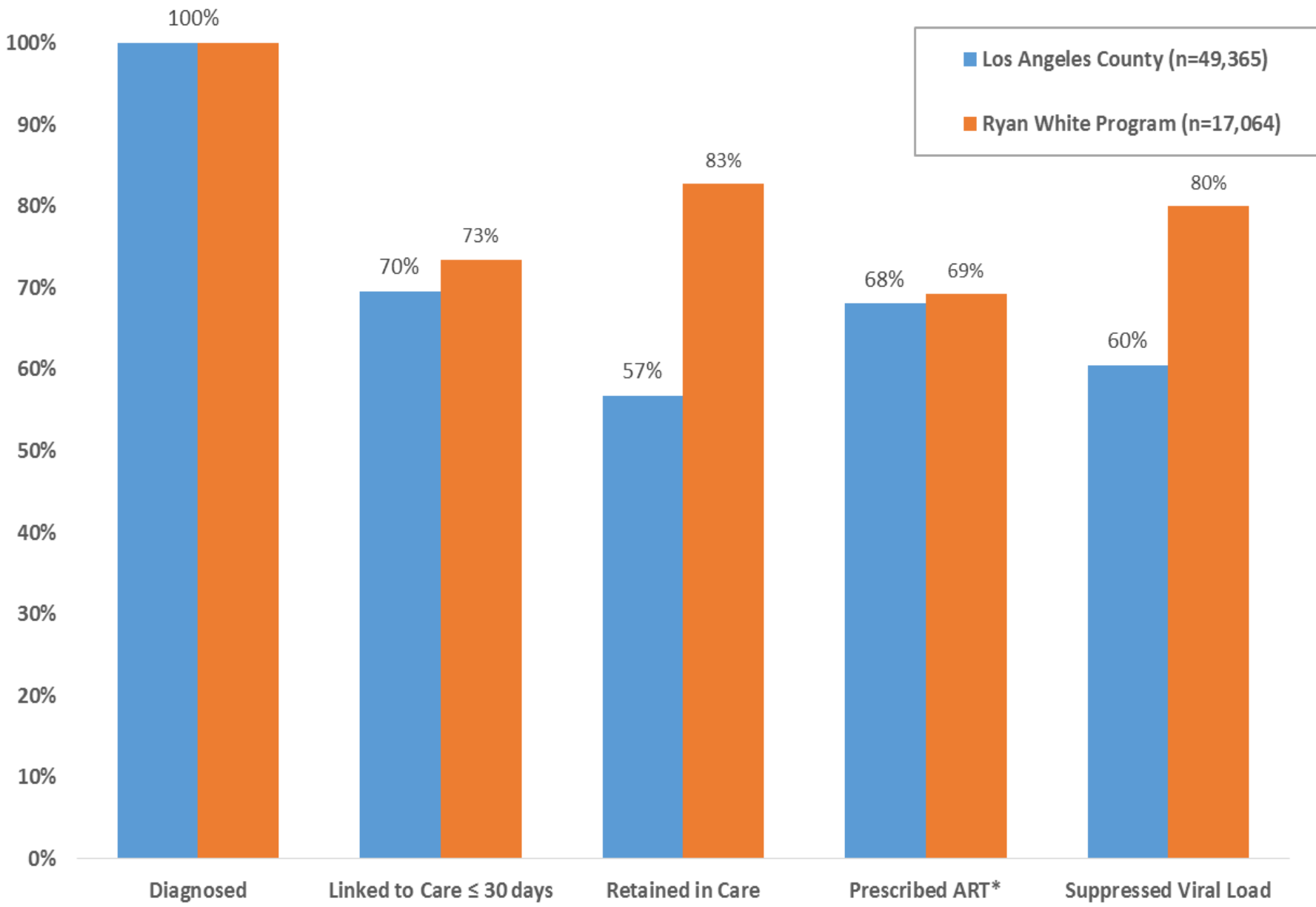
# Estimated Number of Persons Living with HIV and AIDS in LAC at End of 2014



1. Local estimates indicate that 12.3% of PLWH are unaware of their infection.
2. Includes an estimated 1,120 lab reports pending investigation likely to result in unduplicated cases.
3. Includes persons diagnosed with HIV in 2014 and living as of 12/31/2014. Data based on most recently reported residential address.
4. Includes persons diagnosed with HIV by 12/31/2013 and living as of 12/31/2014. Data based on most recently reported residential address.

Source: LAC Division of HIV and STD Programs, reported as of 12/31/15.

# HIV Care Continuum in Los Angeles County among LAC Ryan White Part A Program Clients, 2015



Source: Los Angeles County Division of HIV and STD Programs (DHSP)



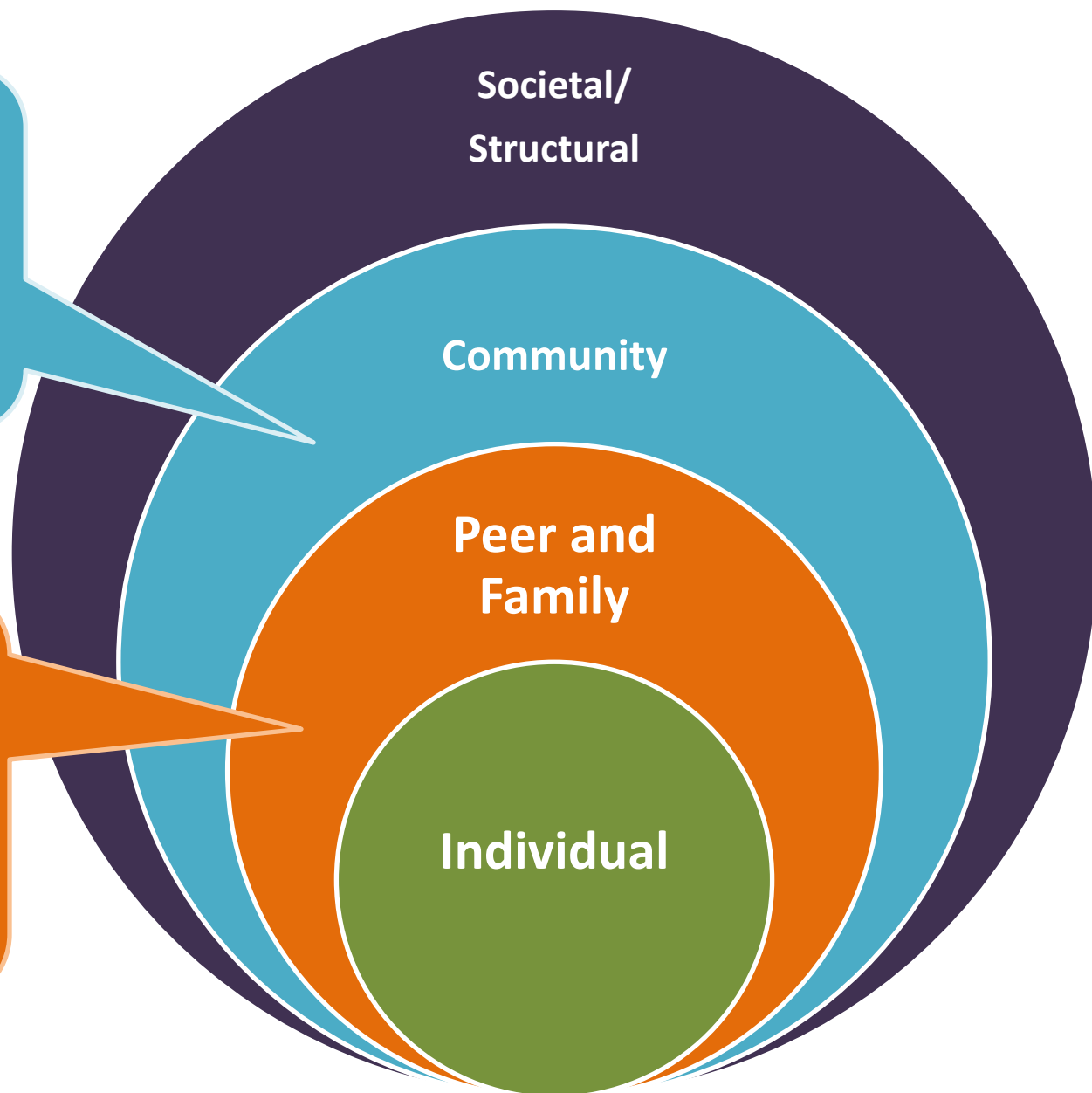
# Los Angeles County Commission on Comprehensive HIV Continuum Socioecological Perspective

## Community Determinants:

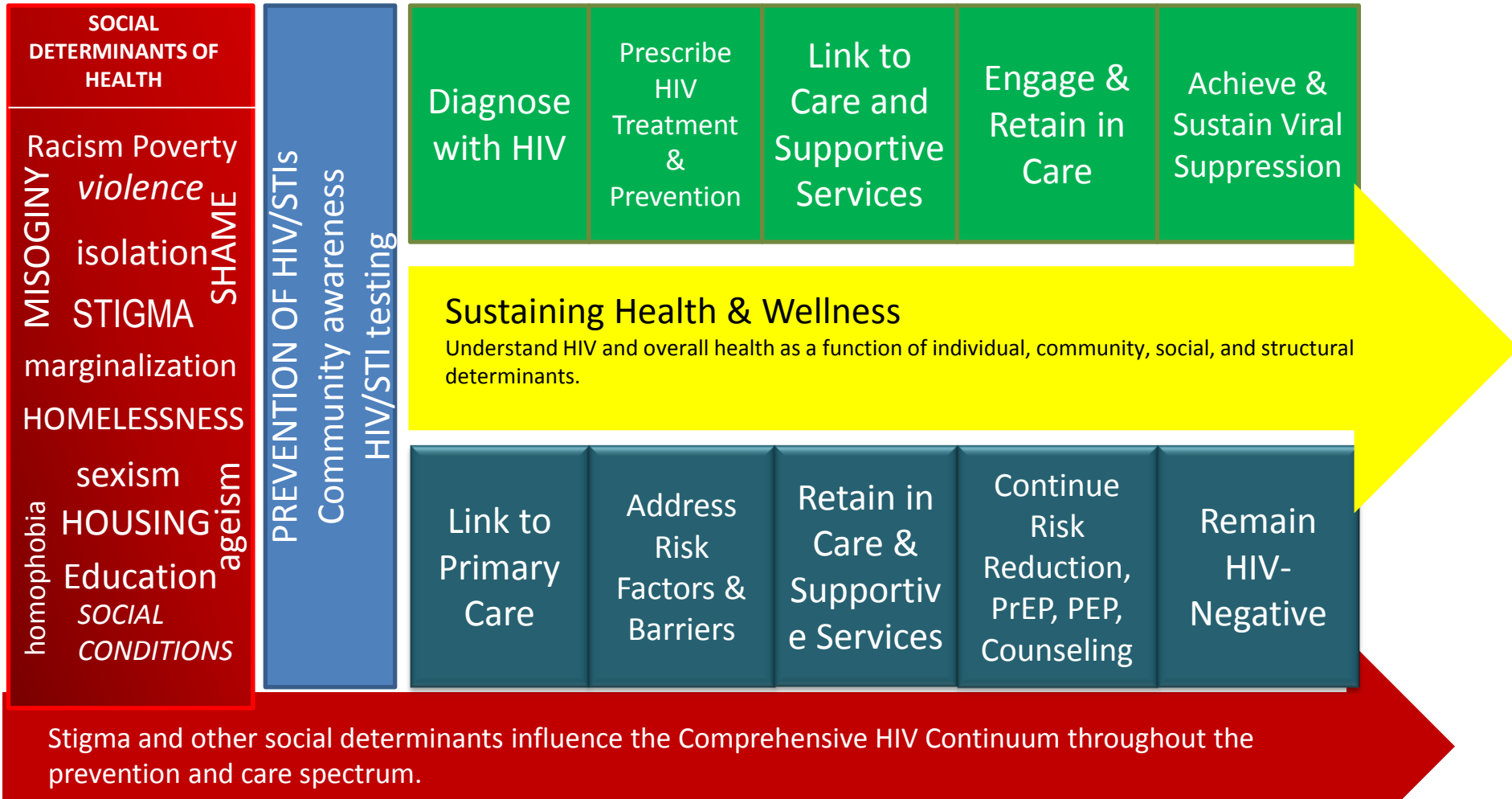
- Behavioral norms and belief systems
- Community cohesion and empowerment
- Stigma
- Access to care/services

## Peer and Family Determinants:

- Partner involvement
- Communication and Disclosure
- Support groups
- Care taking responsibilities
- Social support and networks (incl. media/electronic)



# Los Angeles County Commission on HIV 2016 Comprehensive HIV Continuum Framework



LEGEND: The connected boxes depict the complementary and supportive nature of primary and secondary prevention in controlling the HIV/STI disease burden. The green boxes show the HIV/AIDS treatment cascade (PLWHA) while the blue boxes depict the prevention continuum (HIV-negative). Both continua are equally important in decreasing new HIV/STI infections and sustaining health and wellness for PLWHA and those at risk for acquiring HIV/AIDS. The yellow arrow acknowledges that sustaining health and wellness is the ultimate goal for all people receiving HIV-related services, regardless of their status. The goal extends beyond achieving viral load suppression or maintaining a negative serostatus.



# Goal 1: Reduce New HIV Infections

Objective 1.1 By December 31, 2021, LAC will decrease the number of new HIV infections by at least 25%.

## STRATEGIES



Increase:

- Viral suppression for PLWH
- Engagement in quality medical care for HIV- individuals
- Access to toolbox of interventions to reduced risk of acquiring/transmitting HIV.



Reduce % of persons undiagnosed HIV infection % of diagnosed who are not in care



# Goal 1: Reduce New HIV Infections

Objective 1.2 By December 31, 2021, LAC will increase to 25,000 the number of high-risk HIV negative individuals accessing PrEP and nPEP.

## STRATEGIES



Eliminate structural and provider barriers to accessing PrEP and nPEP



Educate high risk individuals about PrEP and nPEP



Decrease stigma related to accessing PrEP and nPEP



# Goal 2: Increase Access to Care and Improve Health Outcomes for PLWH

Objective 2.1 By December 31, 2021, LAC will increase the percentage of newly diagnosed persons linked to HIV medical care within one month of their HIV diagnosis to at least 85%.

## STRATEGIES



Remove system barriers to care



Educate medical and other providers



Reduce stigma and address other social determinants of health that are barriers to linkage to care



# Goal 2: Increase Access to Care and Improve Health Outcomes for PLWH

Objective 2.2 By December 31, 2021, LAC will increase the percentage of persons with diagnosed HIV infection who are retained in HIV medical care to at least 85%.

## STRATEGIES

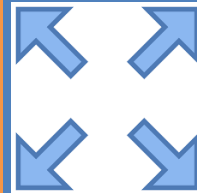


Increase:

- Housing stability among PLWH
- Access to high quality behavioral services



Minimize administrative barriers to retention in care



Expand access to Ryan White-funded services



# Goal 3: Reduce HIV-Related Disparities and Health Inequities

Objective 3.1 By December 31, 2021, LAC will decrease the number of new HIV diagnoses by at least 30% in the following groups: YMSM, Blacks/African Americans, Latino MSM, and Transgender Persons

## STRATEGIES



Have developmental and cultural specificity in HIV prevention efforts



Increase PrEP and nPEP uptake in each population proportionate to their % of recent diagnoses



Reduce stigma and address other social determinants of health that are barriers to accessing the full continuum of services



# Goal 3: Reduce HIV-Related Disparities and Health Inequities

Objective 3.2 By December 31, 2021, LAC will increase to 80% viral suppression among the following groups: persons who inject drugs, youth (18-29 years), ciswomen, transgender persons, Blacks/African Americans, and American Indians/Alaska Natives.

## STRATEGIES



Decrease % of PLWH who are out of care



Tailor services to address specific barriers to viral suppression for each group



Ensure equitable access to high quality HIV care



# Goal 4: Create a Collaborative System, Inclusive of Public and Private Sectors that Best Responds of HIV, STIs, and Social Determinants of Health

Objective 4.1 By December 31, 2021, the LAC DHSP and/or COH will implement at least 3 internal efforts to improve the coordination of HIV programs within LAC DHS (increase coordination with key stakeholders).

## STRATEGIES



Leverage internal reorganization of LAC DHS



Improve communication and coordination among HIV service providers



Actively participate in other strategic planning processes within the county



# Goal 4: Create a Collaborative System, Inclusive of Public and Private Sectors that Best Responds of HIV, STIs, and Social Determinants of Health

Objective 4.2 By December 31, 2021, the LAC DHSP and/or COH will implement at least 3 external efforts to improve the coordination of HIV programs within LAC DHS (increase coordination with key stakeholders).

## STRATEGIES



- Strengthen collaboration with State Office of AIDS, public and private healthcare systems
- Strengthen collaboration with the Housing Continuum of Care in LAC, including HOPWA





# What Can You Do?

- Use CHP as a planning tool within your agencies.
- Adopt some of the goals, objectives, and strategies.
- Engage in the local community planning process.
- Assess strengths and capacities of your agency.
- Provide ongoing feedback.



# Contact Information

Los Angeles County Commission on HIV

<http://hiv.lacounty.gov>

Cheryl Barrit, Executive Director

[Cbarrit@lachiv.org](mailto:Cbarrit@lachiv.org)

Thank you.

