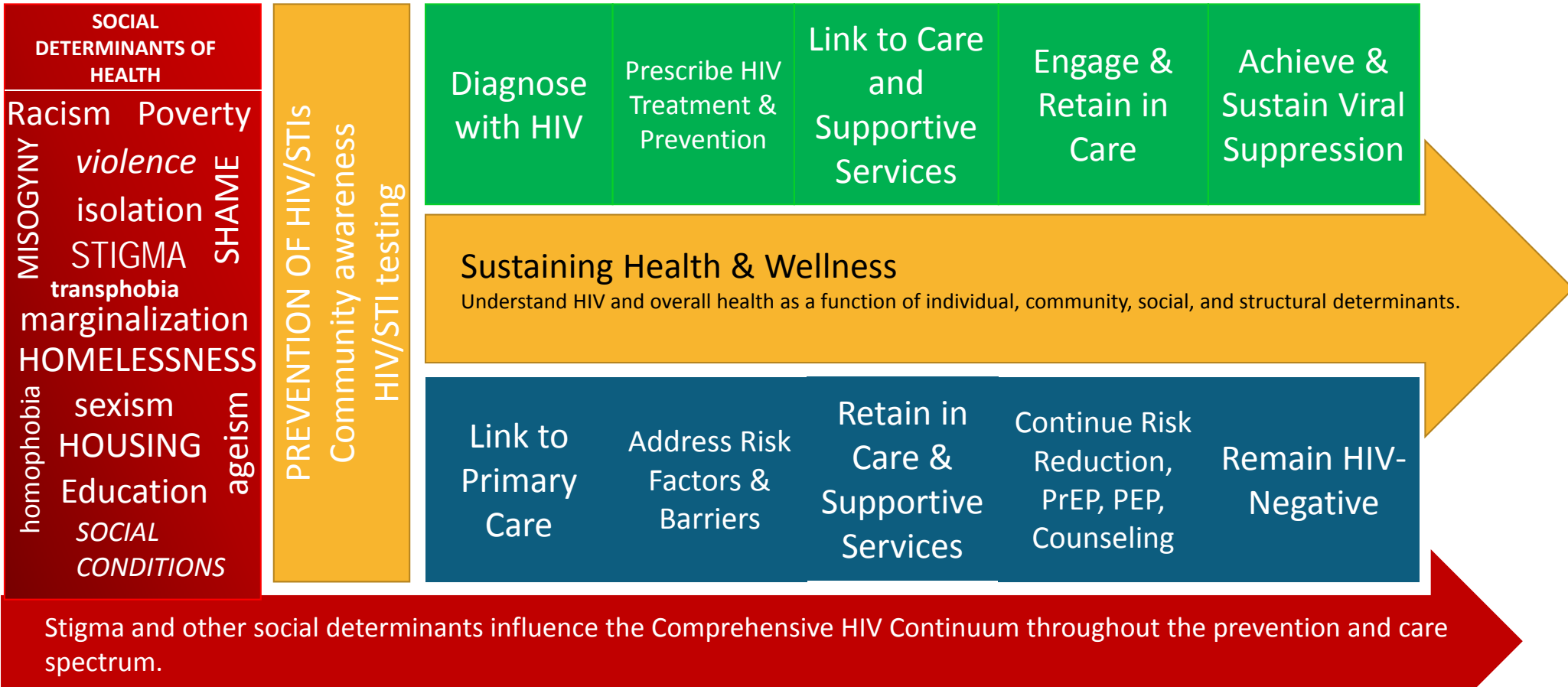


**Los Angeles County Commission on HIV  
Comprehensive HIV Continuum Framework (Final Approved 12.8.16)**



LEGEND: The connected boxes depict the complementary and supportive nature of primary and secondary prevention in controlling the HIV/STI disease burden. The green boxes show the HIV/AIDS treatment cascade (PLWHA) while the blue boxes depict the prevention continuum (HIV-negative). Both continua are equally important in decreasing new HIV/STI infections and sustaining health and wellness for PLWHA and those at risk for acquiring HIV/AIDS. The yellow arrow acknowledges that sustaining health and wellness is the ultimate goal for all people receiving HIV-related services, regardless of their status. The goal extends beyond achieving viral load suppression or maintaining a negative serostatus.